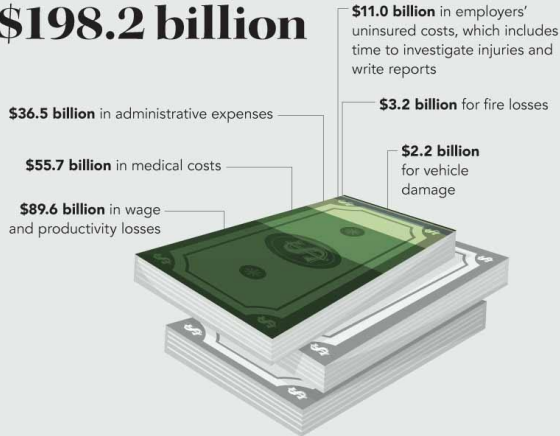


The ROI of Safety

Cost of occupational injuries and deaths, 2012

Total cost to society:

\$198.2 billion



\$1,400
= INJURY IMPACT PER WORKER

This includes the goods or services each worker must produce to offset the cost of work injuries. It is not the average cost of a work-related injury.

\$39,000

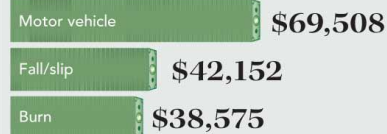
Cost per medically consulted injury, including estimates of wage losses, medical expenses, administrative expenses and employer costs



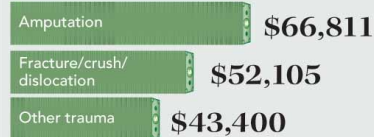
How much?

Injuries can be costly. Here is a quick rundown of some of the more expensive injury types by average cost per workers' compensation claim from 2010 to 2011.

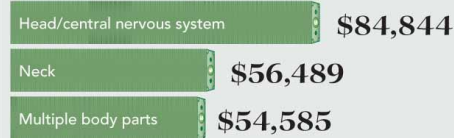
BY CAUSE OF INJURY:



BY NATURE OF INJURY:



BY PART OF BODY:



The average combined cost was **\$36,592** per claim.

Cost per death:

\$1.42 MILLION



Various studies have shown **\$1** invested in injury prevention returns between **\$2** and **\$6**.